



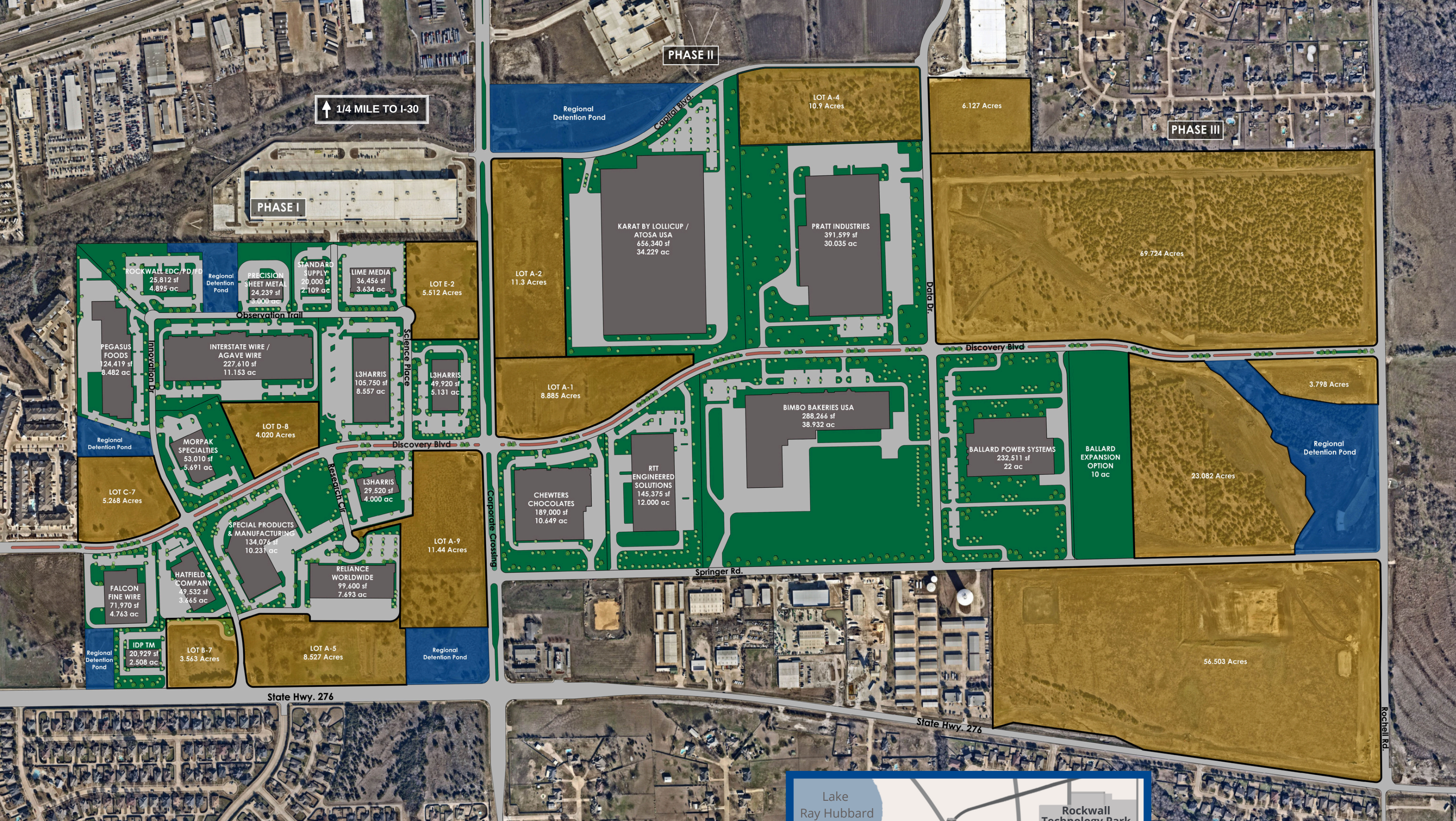
# ROCKWALL TECHNOLOGY PARK: ACRES OF POSSIBILITIES

2610 Observation Trail, Suite 104 | Rockwall, Texas 75032  
972-772-0025 | [info@rockwalledc.com](mailto:info@rockwalledc.com)  
[www.rockwalledc.com](http://www.rockwalledc.com)



**ROCKWALL**  
Economic Development Corporation





**ROCKWALL**  
Economic Development Corporation



# ABOUT THE ROCKWALL TECHNOLOGY PARK

- 550 Acres of Premium Real Estate
- 1/4 Mile from I-30 with Four Interstate Access Points, Just 23 Miles East of Dallas
- 3.5 to 70-acre Contiguous and Divisible Sites Available
- Shovel-Ready Property with Water, Sewer, Electric, Gas and Stormwater at the Curb
- Oversized Roads
- Discounted Land and Custom Incentive Packages for Qualified Companies\*
- Many Sites Served by Off-Site Regional Detention, Allowing for Maximum Utilization of Private Land

\*All companies and projects must meet qualifications to become eligible for land. For more details regarding qualifications, please contact the REDC office or visit our website.



Chewters CEO Richard Foley with REDC President Phil Wagner at the January 2025 groundbreaking for the new ChocXO manufacturing facility.



- Daily Park Maintenance
- Common-Area Landscaping and Park Amenities
- Covenants, Conditions, and Restrictions that Protect Investment
- Over 2.9M Square Feet and \$500M of Existing or Committed Taxable Investment
- Current or Future Home to an Estimated 2,500 Full-Time Employees
- Retail Amenities Planned Within Walking Distance
- Available Workforce Housing at Adjacent Properties
- Nearby Rail and Airports
- Annual Employee Appreciation Events Held by REDC